

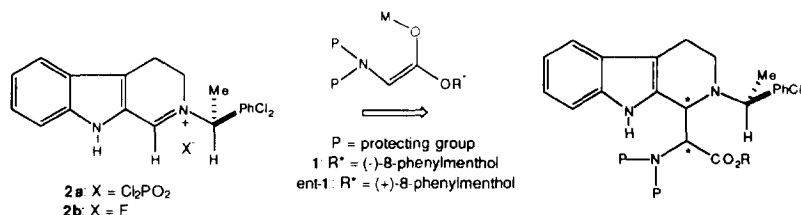
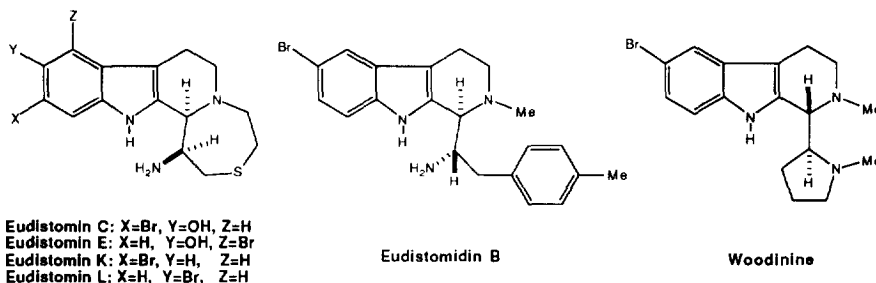
0040-4039(95)02264-3

## Remarkable Examples of Double Diastereodifferentiation: Application to the Eudistomin and Eudistomidin Alkaloids

Richard P. Polniaszek<sup>1\*</sup> and Stephanie J. Bell  
 Department of Chemistry, Duke University, Durham, NC 27706

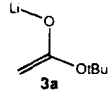
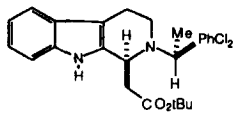
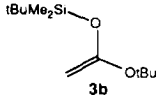
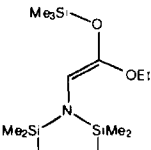
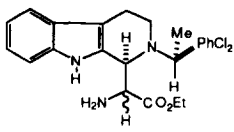
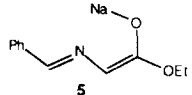
**Abstract:** Nucleophilic addition of chiral enolates **1** and ent-**1** with chiral iminium ion **2a** occur with total stereochemical control.

The unique oxathiazepine ring system and promising biological activity associated with the Eudistomin alkaloids<sup>2</sup> has stimulated several investigators to study approaches<sup>3</sup> to the targets and has culminated in several total syntheses.<sup>4</sup> Eudistomidin B<sup>5</sup> and woodinine<sup>6</sup> are related  $\beta$ -carboline natural products isolated from the same type of marine organism. A unified approach to these various targets involving diastereoselective addition reactions of chiral enolates **1** and ent-**1** with chiral iminium ion **2a** is described herein.



We demonstrated earlier that addition of achiral nucleophiles to cyclic iminium ions derived from 2,6-dichlorophenylethylamine<sup>7</sup> was a highly diastereoselective process.<sup>8</sup> Iminium ion **2a**, prepared from tryptamine in four steps (62%),<sup>9</sup> reacted stereospecifically with the lithium enolate of *t*-butyl acetate **3a** (Table). Nucleophilic addition of silyl enol ether **3b** was counterion dependent. The silyl enol ether did not react with **2a** but did react with **2b**, wherein the counterion (X) was changed to fluoride. Only one isomer of the adduct **7** was detected. The configuration of the newly formed stereogenic center in **7** was assigned by analogy to our previous study.<sup>8</sup> Reaction of the iminium ion with either the lithium enolate **4a** or trimethylsilyl enol ether **4b** of the stable protected form of ethyl

Table: Reaction of Iminium Ions 2a-b with Enolates

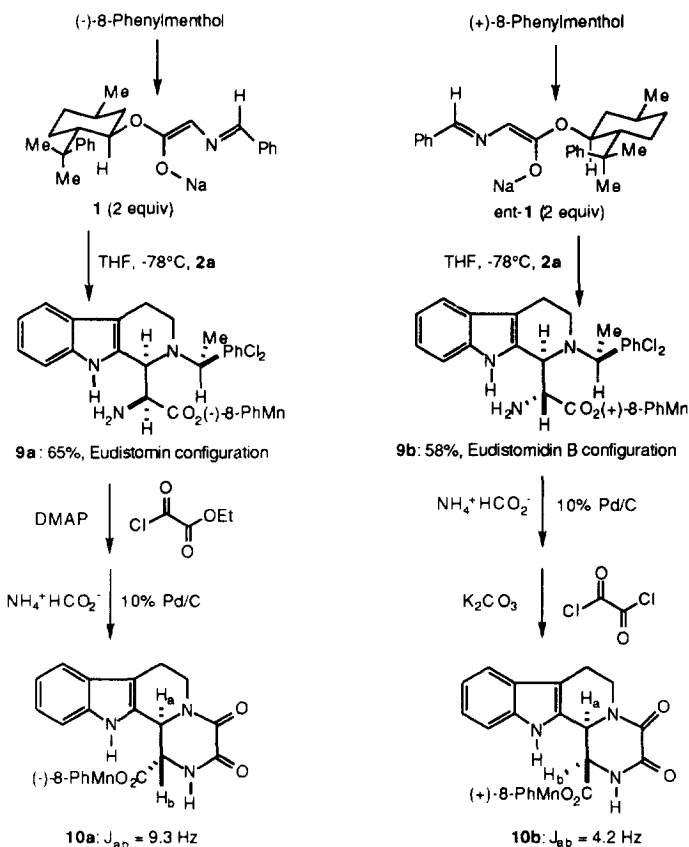
Entry	Nucleophile	Equivalents of Nucleophile	Substrate	Yield	Product
1		10	2a	48%	
2		4	2a	51%	7
3		2 5	2a (for M=Li) 2b (for M=TMS)	22% 31%	
4		2	2a	59%	8: 2 stereoisomers

glycinate<sup>10</sup> afforded **8** as a 1-2:1 mixture of two stereoisomers. Again, **4b** reacted with **2b** but not **2a**. A similar mixture of isomers was obtained when **2a** underwent reaction with the the sodium enolate **5** of the benzylidene imine of ethyl glycinate.<sup>11</sup> Of the various glycine enolate synthons studied, the yields were best with enolate **5**.

Given that the nucleophilic additions of **3a-b** with **2a-b** were highly selective, we reasoned that the mixture of stereoisomers obtained in the reactions of **4a-b** and **5** with **2a-b** was due to a lack of control at the stereocenter adjacent to the ester moiety in **8**. The usual means of establishing control in mechanistically related aldol addition reactions is to vary the stereochemistry of the enolate. Since there is no obvious way of altering the stereochemistry of enolates derived from benzylidene imines of ethyl glycinate, we probed the face selection of reactions of chiral enolates **1**<sup>12</sup> and *ent*-**1** with chiral iminium ion **2a**.

(-) and (+)-8-Phenylmenthol<sup>13</sup> were acylated with  $\alpha$ -bromoacetyl chloride, the resultant  $\alpha$ -haloesters displaced with tetramethyl ammonium azide,<sup>14</sup> the azides reduced with stannous chloride,<sup>15</sup> and converted to the imines by condensation with benzaldehyde.<sup>10</sup>

In the event, the sodium enolates **1** and *ent*-**1** underwent stereospecific addition reactions with iminium ion **2a** affording a unique adduct in each case as measured by <sup>1</sup>H NMR and <sup>13</sup>C NMR. The stereochemistry of **9a** was assigned by acylation of the primary amine moiety with ethyl oxalyl chloride followed by hydrogenolysis and *in situ* ring closure to piperazinedione **10a**. Piperazinedione **10b** was prepared similarly from **9b**. The coupling constant of H<sub>a</sub> and H<sub>b</sub> in **10a** was 9.3 Hz, J<sub>ab</sub> of H<sub>a</sub> and H<sub>b</sub> in **10b** was 4.2 Hz.<sup>16</sup> The coupling constants are similar in magnitude to structurally related piperazinediones<sup>17</sup> and are consistent with the stereochemical assignments.

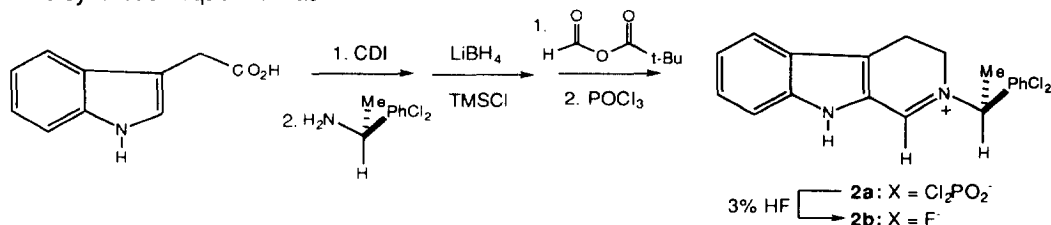


The nucleophilic addition reactions of **1** and **ent-1** with **2a** constitute a remarkable example of double diastereodifferentiation.<sup>18</sup> The high level of stereochemical control is presumably due to the fact that the reaction involves the combination of oppositely charged species. Hence the activation energy must be very low and the transition state very early, where ground state conformational preferences of each reactant are important and determine facial selectivity with regard to that component. The stereochemistry resident in **10a** is appropriate for the Eudistomins and that of **10b** is appropriate for Eudistomidin B.

#### References:

1. Current Address: Bristol-Myers Squibb, Department of Chemical Process Research, New Brunswick, NJ 08903. We gratefully acknowledge support of this research by a Junior Faculty Research Award to RPP and the Donors of the Petroleum Research Fund.
2. Rinehart Jr., K.L.; Kobayashi, J.; Harbour, G.C.; Hughes Jr., R.G.; Mizsak, S.A.; Scahill, T.A. *J. Am. Chem. Soc.* **1984**, *106*, 1524. Rinehart Jr., K.L.; Kobayashi, J.; Harbour, G.C.; Gilmore, J.; Mascal, M.; Holt, T.G.; Shield, L.S.; Lafargue, F. *J. Am. Chem. Soc.* **1987**, *109*, 3378. Lake, R.J.;

- Blunt, J.W.; Munro, M.H.G. *Aust. J. Chem.* **1989**, *42*, 1201. Lake, R.J.; Brennan, M.M.; Blunt, J.W.; Munro, M.H.G. *Tetrahedron Lett.* **1988**, *29*, 2255.
3. Han, S.Y.; Lakshmikantham, M.V.; Cava, M.P. *Heterocycles* **1985**, *23*, 1671. Behm, H.; Beurskens, P.T.; Plate, R.; Ottenheijm, H.C.J. *Rec. Trav. Chim. Pays-Bas* **1986**, *105*, 238. Hino, T.; Hasegawa, A.; Liu, J.J.; Nakagawa, M. *Chem. Pharm. Bull.* **1990**, *38*, 59. Hermkens, P.H.H.; Maarseven, J.H.V.; Kruse, C.G.; Scheeren, H.W. *Tetrahedron Lett.* **1989**, *30*, 5009. Kirkup, M.P.; Shankar, B.B.; McCombie, S.; Ganguly, A.K.; McPhail, A.T. *Tetrahedron Lett.* **1989**, *30*, 6809. Hermkens, P.H.H.; Maarseveen, J.H.; Cobben, P.L.H.M.; Ottenheijm, H.C.J.; Kruse, C.G.; Scheeren, H.W. *Tetrahedron* **1990**, *46*, 833. Maarseveen, J.H.V.; Scheeren, H.W.; Kruse, C.G. *Tetrahedron* **1993**, *49*, 2325.
4. Still, I.W.J.; Strautmanis, J.R. *Can. J. Chem.* **1990**, *68*, 1408. Nakagawa, M.; Liu, J.J.; Hino, T. *J. Am. Chem. Soc.* **1989**, *111*, 2721. Hermkens, P.H.H.; Maarseveen, J.H.V.; Ottenheijm, H.C.J.; Kruse, C.G.; Scheeren, H.W. *J. Org. Chem.* **1990**, *55*, 3998.
5. Kobayashi, J.; Cheng, J.; Ohta, T.; Nozoe, S.; Ohizumi, Y.; Sasaki, T. *J. Org. Chem.* **1990**, *55*, 3666.
6. Debitus, C.; Laurent, D.; Pais, M. *J. Nat. Prod.* **1988**, *51*, 799. McNulty, J.; Still, I.W.J. *Tetrahedron Lett.* **1991**, *32*, 4875. Mahboobi, S. *Arch. Pharm.* **1992**, *325*, 249.
7. Polniaszek, R.P.; Lichti, C.F. *Syn. Comm.* **1992**, *22*, 171.
8. Polniaszek, R.P.; Dillard, L.W. *Tetrahedron Lett.* **1990**, *31*, 797.
9. The synthetic sequence was:



10. Djuric, S.; Venit, J.; Magnus, P. *Tetrahedron Lett.* **1981**, 1787. Overman, L.E.; Osawa, T. *J. Am. Chem. Soc.* **1985**, *107*, 1698.
11. Stork, G.; Leong, A.Y.W.; Touzin, A.M. *J. Org. Chem.* **1976**, *41*, 3491.
12. A report of a related chiral enolate appeared during the course of our investigation: Kanemasa, S.; Mori, T.; Tatsukawa, A. *Tetrahedron Lett.* **1993**, *34*, 8293.
13. Ensley, H. E.; Parnell, C.A.; Corey, E.J., *J. Org. Chem.* **1978**, *43*, 1610. Ort, O. *Org. Syn.* **1987**, *65*, 203.
14. Papa, A.J. *J. Org. Chem.* **1966**, *31*, 1426.
15. Maiti, S.N.; Singh, M.P.; Micetich, R.G. *Tetrahedron Lett.* **1986**, *27*, 1423.
16. <sup>1</sup>H NMR spectra were recorded in CDCl<sub>3</sub> in the presence of D<sub>2</sub>O in order to remove coupling of H<sub>B</sub> with the vicinal NH proton.
17. Mahboobi, S.; Burgemeister, T.; Wiegrebe; W. *Arch. Pharm.* **1993**, *326*, 33.
18. Masamune, S.; Choy, W.; Peterson, J.S.; Sita, L.R. *Angew. Chemie Int. Ed. Eng.* **1985**, *24*, 1.

(Received in USA 19 October 1995; revised 20 November 1995; accepted 21 November 1995)